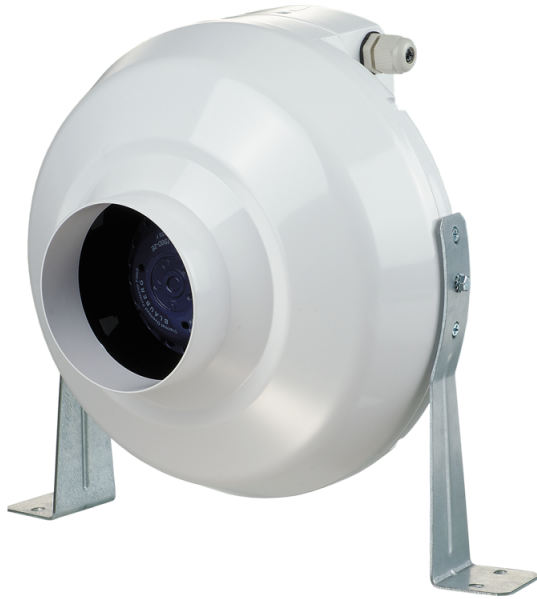


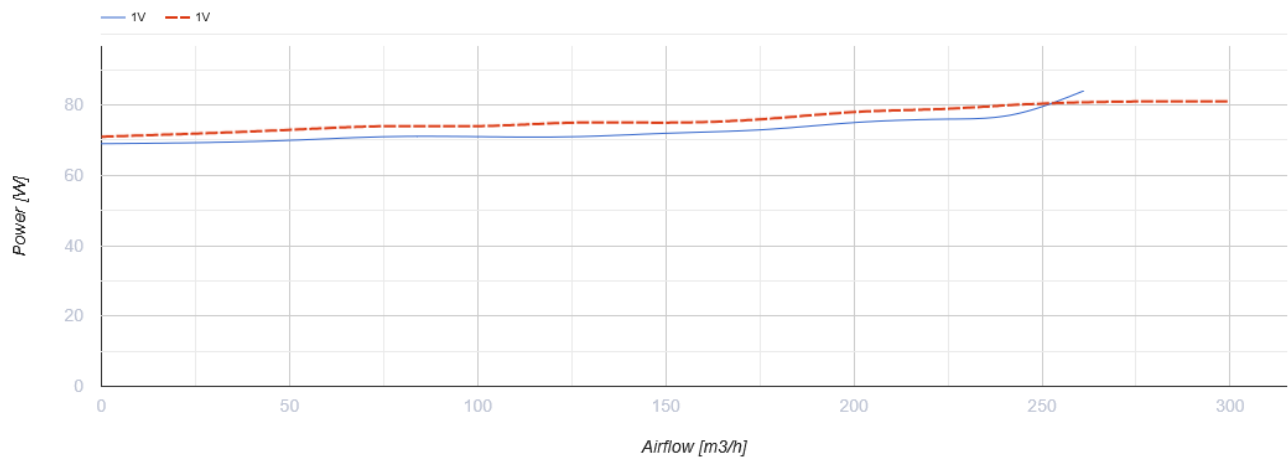
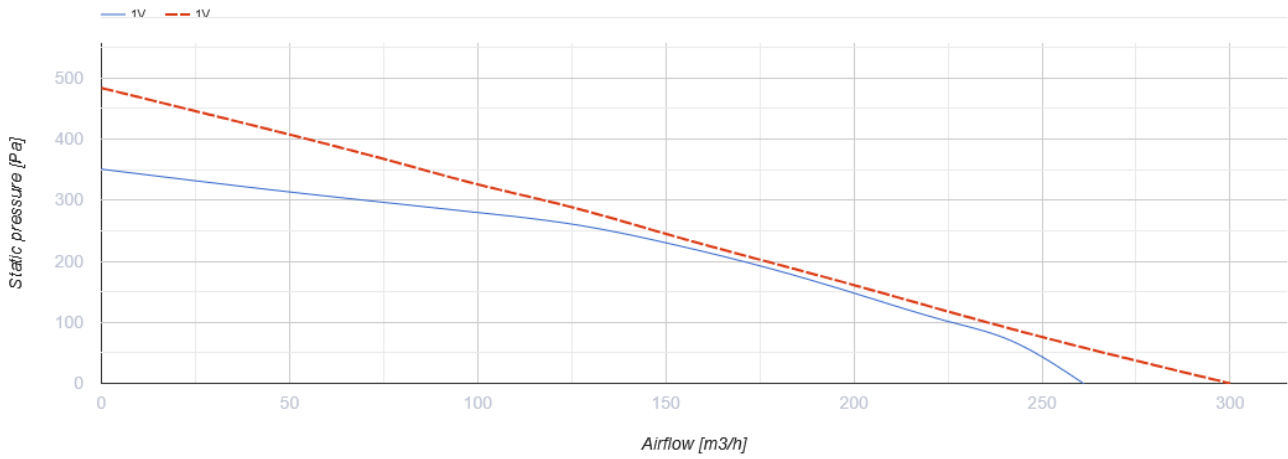
VK 100



Centrifugal inline fans in plastic casing

- Sound pressure level LpA at 3 m: 40
- Impeller type: Centrifugal impeller with backward curved blades
- Casing material: Polypropylene
- Installation in any position

	Unit of measurement	VK 100	
Connected air duct size	mm	100	
Phases	-	1	
Minimum supply voltage	V	230	
Maximum supply voltage	V	230	
Power supply frequency	Hz	50	60
Rated power	W	62	
Unit current	A	0.29	
Maximum airflow	m ³ /h	250	
Rotation speed at 50hz	-	2820	
Sound pressure level LpA at 3 m	dB(A)	40	
Weight	kg	2.01	
Transported air temperature (max)	°C	55	
Transported air temperature (min)	°C	-25	
Ingress protection rating	-	IPX4	
Impeller material	-	Plastic	
Article	-	8049705	



Dimensions

ØD	ØD1	B	L	L1	L2	L3
100	250	270	230	30	27	30

