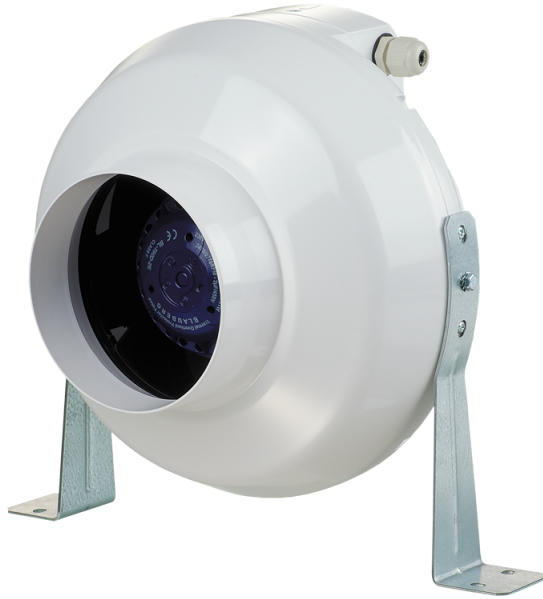


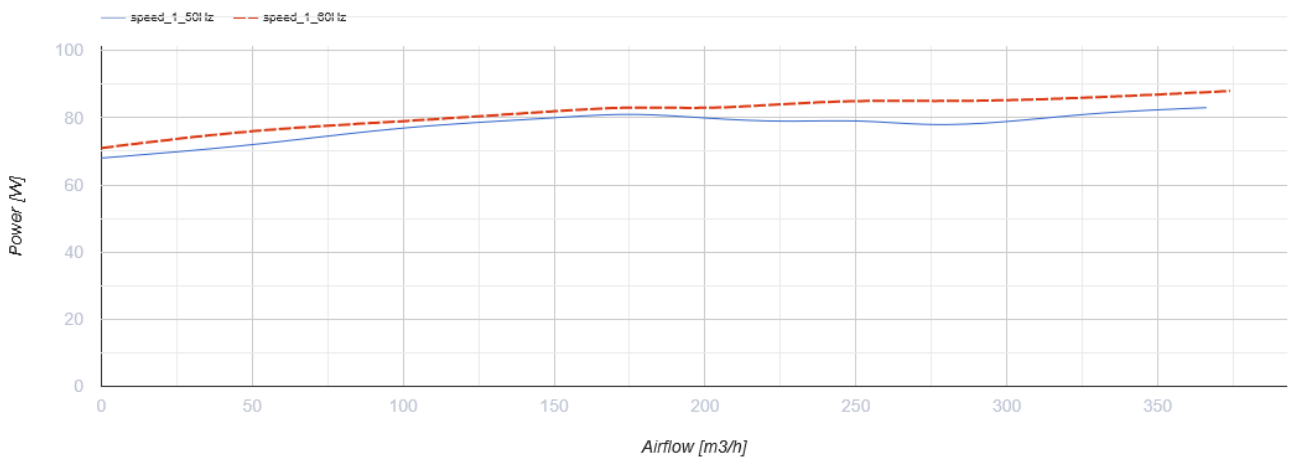
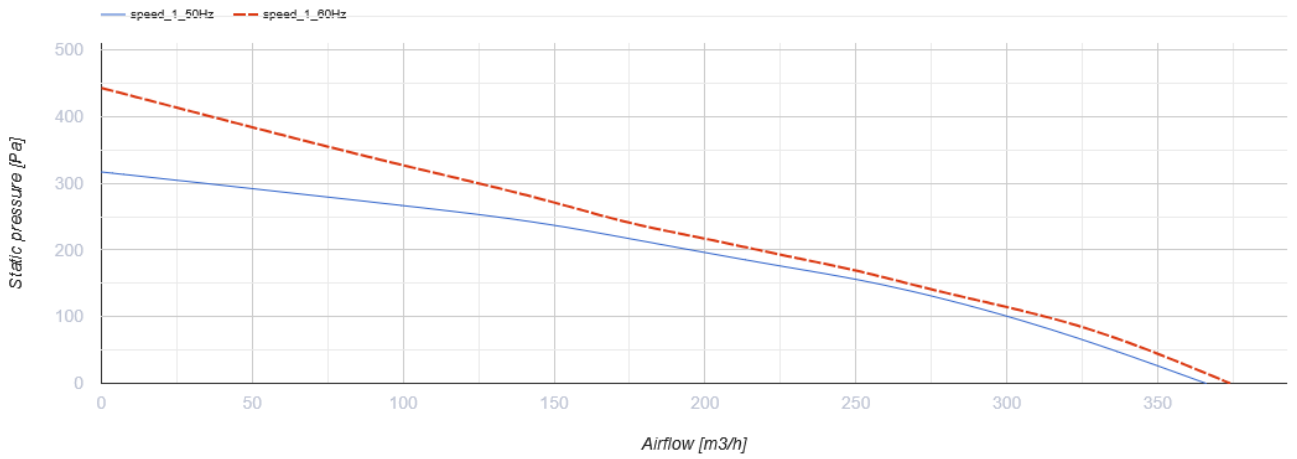
VK 125



Centrifugal inline fans in plastic casing

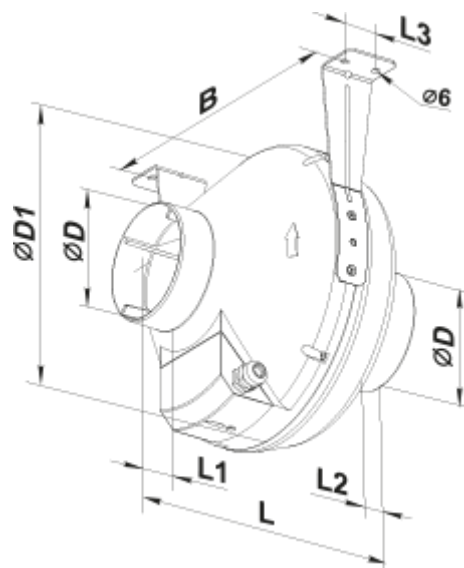
- Sound pressure level LpA at 3 m: 40
- Impeller type: Centrifugal impeller with backward curved blades
- Casing material: Polypropylene
- Installation in any position

	Unit of measurement	VK 125	
Connected air duct size	mm	125	
Phases	-	1	
Minimum supply voltage	V	230	
Maximum supply voltage	V	230	
Power supply frequency	Hz	50	60
Rated power	W	63	
Unit current	A	0.29	
Maximum airflow	m ³ /h	340	
Rotation speed at 50hz	-	2800	
Sound pressure level LpA at 3 m	dB(A)	40	
Weight	kg	2.2	
Transported air temperature (max)	°C	55	
Transported air temperature (min)	°C	-25	
Ingress protection rating	-	IPX4	
Impeller material	-	Plastic	
Article	-	8042164	

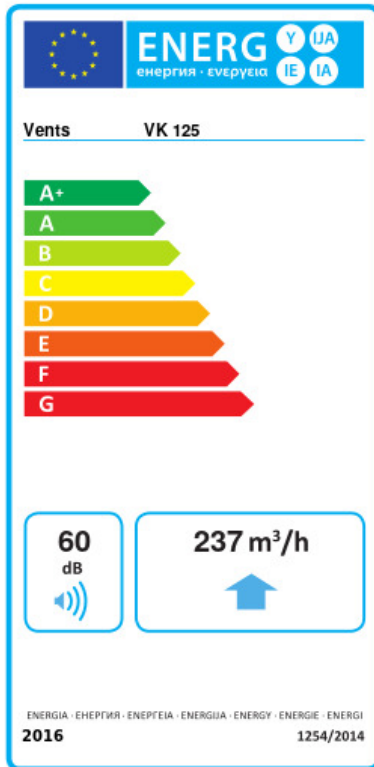


Dimensions

ØD	ØD1	B	L	L1	L2	L3
125	250	270	220	30	27	30



Ecodesign



Trademark	Vents					
Model	VK 125					
Specific energy consumption (SEC) (kWh/(m ² /a))	Cold		Average		Warm	
	-51.9	A+	-24.8	C, B	-9.3	F, E
Type of ventilation unit	Unidirectional					
Type of drive installed	Variable speed					
Type of heat recovery system	None					
Maximum flow rate (m ³ /h)	237					
Electric power input (W)	62					
Reference flow rate (m ³ /s)	0.046					
Reference pressure difference (Pa)	50					
Specific power input (SPI) (W/(m ³ /h))	0.262					
Control typology	Local demand control					
Maximum external leakage rates (%)	2.7					
Declared typology	RVU UVU					
Sound power level (dB(A))	60					
The annual electricity consumption (AEC) (kWh/a)	Cold		Average		Warm	
	138		138		138	
The annual heating saved (AHS) (kWh/a)	Cold		Average		Warm	
	5536		2830		1280	